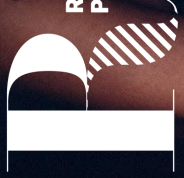




Rosendale
Partnerships



INSPIRING EMPLOYEE ENGAGEMENT WITH THE CULTURAL SECTOR

Creative and innovative professional development, volunteering,
staff benefits and training opportunities

Engagement is an emotional commitment to an organisation, its culture and its goals. Finding new and innovative ways to engage your employees is key in today's competitive market.

Engaged, motivated workers have higher employee satisfaction, which leads to enthusiasm in their role and overall company growth in the form of higher retention and lower turnover; higher productivity; increased profitability; less absenteeism, and increased employee loyalty.

The cultural sector, rooted as they are in emotional engagement, meaning and storytelling, can offer original and creative ways to connect with your staff. The arts sector's expertise in performance, presence, impact and innovation can translate into the corporate environment, offering unique training, professional development and exciting employee benefits.

We are thrilled to outline a huge range of inspiring staff engagement opportunities from some of the UK's most prestigious arts organisations.





THE OLD VIC

The Old Vic is a cultural institution that has prevailed for nearly 200 years and still continues to innovate and make history in the arts today.

STAFF ENGAGEMENT AT THE OLD VIC

Throughout the years, The Old Vic has made entertainment history as the birthplace of the Royal Ballet, the English National Opera and the National Theatre and we have played host to some of the finest theatrical talent, including Richard Burton, John Gielgud, Laurence Olivier, Maggie Smith and Judi Dench.

Using our rich heritage, our reputation as 'an actor's theatre', and our expertise in performance, creativity and impact, we have found innovative and unique ways of transferring these skills into a corporate environment in a fresh, exciting and engaging way.

Since 2004, skilled theatre industry professionals, including world-class voice coaches, directors, performers and technicians, to deliver bespoke training courses to leading businesses such as Marks & Spencer, PwC, Bearing Point and Royal Bank of Canada.

We have devised three robust and practical training modules exclusively for our corporate supporters to address key challenges in the workplace. These are:

- **Personal Presence and Impact** - To increase personal impact through an enhanced awareness of the effects different communication styles have on others
- **Building Influence and Rapport** - To enhance the ability to build rewarding business relationships by maximising the impact of early stage interactions.
- **Leadership** - To prepare current and emerging leaders to articulate and deliver compelling messages for maximum motivation, inspiration and impact.

In addition, we also offer completely bespoke, extensive training programmes upon request.

Packages can include

- Consultancy and Client Liaison to tailor the programme to your participants and their objectives
- Delivery of dynamic, practical workshop in your offices or chosen training space by two expert facilitators using The Old Vic's unique approach of drawing on acting and rehearsal techniques - Collation of evaluation feedback from participants
- Hire of the stunning and inspiring Old Vic building and dedicated Events staff to facilitate the smooth running of your event - These one-day courses are designed for a maximum of ten participants.



ENGLISH NATIONAL OPERA

English National Opera is founded on the belief that opera of the highest quality should be accessible to everyone.

CORPORATE WORKSHOPS AT ENO

English National Opera is passionate about helping businesses develop the skills of their employees. Alongside offering entertainment with world-class opera and exciting events, we also provide training, talks and workshops to help inspire your staff.

Whether it's your women's network, young talent or executive team, we can plan bespoke learning opportunities for you. ENO provides practical training and creative talks tailored to the needs and objectives of a diverse range of clients.

We can offer:

- One-to-one coaching
- Group training days

Our professional development packages can include:

Leadership skills

- Influence & Rapport
- Creative Communication
- The Leading Role (a training session for SMTs).

Personal Impact

- Conquering Nerves
- Strength Finder

Presentation skills

- Introduction to public speaking
- Storytelling
- Power of the Pitch
- Elocution & Articulation

Each workshop will be a day long and include the following:

- Presentation / talk
- Practical activities to introduce techniques
- Take-away tool kit

Our workshops are delivered by professional corporate training freelancers and/or Opera and Theatrical professionals.

Some examples of the practical activities included are:

- Exercises that focus on breathe, body and voice and increasing vocal impact through pitch, pace, pause and power.
- Performance tools and actor techniques to build gravitas and hook your audience.
- Stanislavski's given circumstances – to appreciate the importance of structure and a clear objectives.

POET IN THE CITY

We create poetry experiences to connect people to each other and the world.



POET IN THE CITY

We are the leading producer of accessible live poetry events – annual programme of events, a festival, commissions, workshops, training. We help places and people tell their stories, create access to hard ideas, attract radically new audiences, bring about social and behavioural change, and create awe-inspiring entertainment and parties.

Everything we do delivers: Understanding, Connection, Enjoyment.

Our two HR specialisms are:

- Training
- Creating diverse corporate cultures

TRAINING

Our training offer supports companies to:

- Improve staff creativity
- Develop writing skills and break down poor communication habits
- Find imaginative new ways to support client needs, such as poetry-inspired brainstorming around briefs
- Build collaborative and creative teams

- Deliver interesting and imagination-sparking away-days

Our Approach

We deliver workshops curated in response to a specific brief, with typical challenges including: 'I need my team to be more creative', 'We have become a slave to corporate language, how do we get out?', 'I'd like to offer something a bit different for an away-day', 'It would be good to connect staff with trailblazing thinkers', 'We need to find new ways to explore challenges in our industry'.

CREATING DIVERSE CORPORATE CULTURES

Poetry is fantastic at bringing people together and creating new perspectives, and a key benefit of working with poets to progress discussions around diversity is that they represent the full plethora of diverse identities in the UK. We work with poets with all socio-economic backgrounds, ages, ethnicities, genders and bodies to create performances and discussions which move the conversation about representation forward.

You might commission an event or roundtable to help:

- Change internal and external perceptions of the organisation
- Explore new ways to think about diversity and develop practical solutions for change
- Position yourselves as thought leaders in representation

Our Approach

1. Poetry-inspired panel discussions for staff and clients to promote a commitment to diversity and bring new people into the debate for your company and sector. By presenting and hosting a thought-provoking event with leading cultural and industry speakers, you will build brand perceptions as a company which cares about diversity and which is taking a creative approach to build a diverse corporate culture.

2. Roundtable discussions with key stakeholders to create a set of actions around culture-change. Our roundtable discussions are creative sessions designed to get to the heart of difficult issues and provide an understanding from multiple perspectives about barriers and potential solutions for change.



NATIONAL CENTRE FOR CIRCUS ARTS

The National Centre for Circus Arts is a registered charity and one of Europe's leading providers of circus education.



NATIONAL CENTRE FOR CIRCUS ARTS

Based in a magnificent Victorian power station adjacent to Hoxton Square, we involve thousands of people in the creation and performance of circus arts every year.

EMPLOYEE WORKSHOPS

Our team building workshops are ideal for groups looking to have fun and renew their energy in the workplace.

From trapeze to juggling, stilt walking to acrobatics, your team will try exciting circus skills that will challenge, inspire and get them working together.

- Our **team building packages** offer a great selection of circus skills at a set price, hosted in our professional circus training spaces in Hoxton.
- Our **bespoke workshops** offer a wide range of circus skills, which can be tailored to your requirements. Bespoke workshops can take place in our professional circus training spaces in Hoxton. We are also able to offer workshops at a venue of your choosing.
- Our **Graduate Training Workshops** include a mixture of ice-breakers and tailored team building circus activities - with whole-day workshops culminating in the creation of a fantastic circus show. We have run workshops with graduate training schemes at companies including UBS, Barclays and Laing O'Rourke. These fun and challenging events help to take participants out of their comfort zone, learn to appreciate one another's strengths and improve communication and trust.
- Our **Circus icebreaker sessions** are great for energising conferences and meetings. Our range of circus skills can help start the day off with a bang, or re-energise delegates after a lunch break. We can come to your meeting or conference venue to deliver icebreaker sessions with skills like group juggling, body percussion and plate spinning.





ROYAL COURT

The Royal Court Theatre is the writers' theatre. It is the leading force in world theatre for energetically cultivating writers – undiscovered, emerging and established. Through the writers, the Royal Court is at the forefront of creating restless, alert, provocative theatre about now. We open our doors to the unheard voices and free thinkers that, through their writing, change our way of seeing.

ROYAL COURT

CORPORATE WORKSHOPS

We can run tailor-made workshops for your staff, clients and partner schools or charities using the creative expertise of Royal Court staff and artists. These one of a kind learning experiences are inspired from the work that takes place at the Court, run by those who make the work.

All of our workshops are bespoke with a focus on fulfilling your business objectives; we can collaborate to deliver the package that will work for you. Whether it's focusing on learning how to communicate effectively, taking the step up to management or tell the story of your pitch, the Royal Court's expert team are sure to inspire and provide a creative learning environment.

These can be delivered in your offices, in our rehearsal room or on one of our iconic stages and can be run by our Participation team, writers or associate directors.

Previous examples of workshops delivered by our in-house creative team include:

- Writing for Impact and the Art of Great Storytelling, run by our Literary Team.
- Presentation workshops, focusing on acting and directing techniques for a corporate environment, delivered by leading theatre directors.

ENTERTAINING OPPORTUNITIES

- **Priority booking** for staff ahead of the public
- Depending on the partnership, we can offer **discounted tickets for employees**
- **Staff ticket packages** - Treat staff to a special night at the Royal Court- we can arrange pre-show drinks, light bites, mains or canapes to be pre-ordered and delivered to a table or area upon arrival. Our team can arrange it all, so you don't have to worry.
- Our Bar & Kitchen often is fully booked, so as a supporter, we can ensure a table and a bespoke service.
- We can arrange spaces for a variety of evenings- **networking events, drinks parties** coined with a production or **cocktail making sessions** and **wine tastings**

- **Private Q&A's** with our Literary and Artistic team to learn about a production's journey.
- **Private Backstage tours** - As a supporter, there is the opportunity to take staff on a private backstage tour of the theatre- meet the costume department, see behind the scenes, tread the boards and hear anecdotes from our team.





CITY OF LONDON SINFONIA

City of London Sinfonia are the orchestral home to over 40 outstanding professional musicians, who come together in the shared belief that music has the power to transform people across all areas of society. CLS has 30 years of experience working in health and social care settings, where we are committed to demonstrating how music can have a positive effect on individuals' mental wellbeing.

CITY OF LONDON SINFONIA

City of London Sinfonia's **Mindful Music** aims to address workers' high levels of stress and anxiety. This innovative format combines outstanding professional music performance with mindful meditation.

Mindful Music aims to achieve the following:

1. Decrease stress, improving focus and boosting working memory
2. Create a culture of openness — supporting people to take steps to improve and care for their mental health
3. Increase mental health literacy — contributing to an increased understanding of mental health
4. Enable practical steps to be taken by employers — providing employers with an innovative opportunity to support their employees' mental health.

Activities involved CLS violinist and mindfulness practitioner Ann Lovatt leads our sessions and is accompanied by an ensemble of 4-5 CLS

players (e.g. string quartet, woodwind quintet). Sessions are typically 30 minutes to one hour in duration, for groups as small as 10 to as many as 100+ people, depending on your needs. Mindful Music can be presented as a one-off Taster session or in blocks of 6-8 sessions:

- **The Taster** is a one-off session with the aim of introducing people to Mindful Music. It is ideal for team development and company away days, conferences and mental health awareness. This is the place to start if you are curious about Mindful Music without making a long-term commitment.
- **Monthly or Weekly sessions** (typically in blocks of 6-8) provide more frequent opportunities for employees to participate in Mindful Music, or make a deeper impact if you wish to offer places to a core group of participants. Sessions can be designed around themes or your company goals to ensure continuity with your brand.

During each session, the musicians give short performances of specially chosen pieces of music that help to focus the mind. Ann's expertise both as a musician and as a

mindfulness practitioner enable her to point out musical elements and melodies within the music to activate 'focused listening' before she leads the participants in a short, guided meditation. Where appropriate, Ann may welcome comments from the participants who wish to reflect on their experience of the music or the meditation.

What is mindfulness?

Mindfulness is a simple and powerful practice of training the attention to focus on the present in a non-judgemental way. Its effectiveness lies in its ability to interrupt the habit of getting lost in unhelpful thoughts, mostly about the future or past, which often generate more stress on top of the real pressures of everyday life. When combined with music, mindful meditation becomes more accessible and is given a powerful focus through outstanding professional live music. With practice, mindfulness can serve as an antidote to the stress that can easily undermine our quality of life, and is a tool that helps focused relaxation.



CONEY

Hello, we are Coney. We are BAFTA award-winning interactive designers. We create playful experiences where strangers talk to each other in order to understand each other better.

*Playful experiences,
strangers meet,
have conversation.*



CONEY

WE CREATE

1. **Bespoke Conversations**

Specific projects that support a wider action for an organisation, such as communicating daily, simple ways to improve climate change to new groups.

2. **Team Cohesion**

Interaction design that facilitates people to talk to one another better. For example when they disagree.

3. **Organisational Insight**

Systems mapping methodology for example for a manager or leader to understand different people's perceptions of the system they are in.

RECENT PARTNERS

Coney's interaction-designers have delivered custom training programmes for a wide variety of clients and organisations spanning sectors, sizes and purposes.

The end product was everything we initially wanted it to be – provocative, absorbing, thought provoking and teed up a whole load of debate.

Richie Jones, Consultancy Director, C Space

When I challenge myself about how deeply an audience can be engaged with some of the drier yet very important science topics, I turn to Coney because I know they'll challenge my audience, in a fun way.

Kat Nilsson, Head of National Programmes, Natural History Museum

Coney are not only fantastically clever and creative in their ideas, but they are the best translators of academic thinking into practice I have met.

Dr Jo Twist, while Commissioning Editor for Channel 4 Education



THE UNICORN THEATRE

The Unicorn Theatre is the UK's leading professional theatre for young audiences, dedicated to inspiring and invigorating young people of all ages and abilities, and empowering them to explore the world – on their own terms – through theatre.

UNICORN THEATRE

Our purpose built home at London Bridge contains two theatres, four floors of public space and two rehearsal studios, allowing us to work with some of the world's most exciting theatre-makers to produce, present and tour a surprising, innovative and broad range of work that is honest, refreshing and international in outlook serving an audience aged between two to 21.

FAMILY EVENTS

With working life busier than ever, we have found the opportunity to invite your staff along with their families is a hugely popular option for companies looking to really offer something a little special and thoughtful in their employee engagement.

Producing around 20 fully resourced professional theatre productions every year means that we can, with imagination and skill, create events for our partner organisations that are fun, playful and

exciting – and uniquely Unicorn. With two gorgeous theatres and a wonderful central London venue, alongside the most thrilling and critically acclaimed children's productions in the country this is the ultimate place to book some family friendly events.

"My daughter said the show was 'brilliant' and loved the play" - **Linklaters**

"Fantastic event, thanks again. Really liked the craft activity at the end, it was great to have that for the children. Really loved the format of the theatre too and the way that the actors interacted with the children." - **Bloomberg**

BESPOKE EVENTS

We create bespoke events for corporate clients, our creative team working with you to create a look and feel to fit your company aims. Elements may include hire of either of our theatres (Weston 300, Clore 100) for an exclusive performance, with wrap around services such as pre- and post -show receptions, catering, goody bags, ushering, cloakroom services and use of our other spaces such as the Foyer and John Lyons Room.

STAFF TRAINING

We would also be delighted to work with you on staff training programmes offering both a stunning and original venue option for some or all elements of the day plus the opportunity to access creative partners to really add innovative and inspirational content.

Other benefits may include:

- Ticket discounts for your employees or partner organisations
- An allocation of complimentary tickets to a Unicorn performance for employees, clients or a charity of your choice, or an exclusive performance of your choosing during the year including Christmas shows.
- Discounted space hire of our theatres, rehearsal rooms or foyer for meetings and events



DULWICH PICTURE GALLERY

Dulwich Picture Gallery is one of the oldest public galleries in the UK, and has been celebrating great art and inspiration for over 200 years within Sir John Soanes' unique building and stunning grounds.

An exceptional architectural setting showing Baroque masterpieces alongside thrilling and revealing exhibitions, the Gallery offers an intimate, revelatory experience and a warm welcome.

DULWICH PICTURE GALLERY

STAFF ENGAGEMENT

We would be delighted to work with you to create a thoughtful programme of staff engagement at our gorgeous venue.

Located in the historic Dulwich Village, the Picture Gallery is in the heart of one of the most green and stunning spots in London, offering a truly unique location for client and staff engagement. And yet what can feel like a rural idyll, a world away from the urban bustle, is in Zone 2, a mere 12min train ride from Victoria or London Bridge

Activities may include:

Opportunity to host your Staff Summer or Christmas Party at the Dulwich Picture Gallery

Opportunity for your employees and their families to enjoy an exclusive early morning viewing of the exhibition at the weekend followed by a day of family fun activities

Gallery experts, curators, artists and designers to talk to employees at your offices.

Acclaimed leadership training for key staff

Free entry to exhibition and Permanent Collection for employees

Employee volunteering opportunities with Education workshops relating to the exhibition

Opportunity to direct an Education workshop to a school of your choice relating to the exhibition

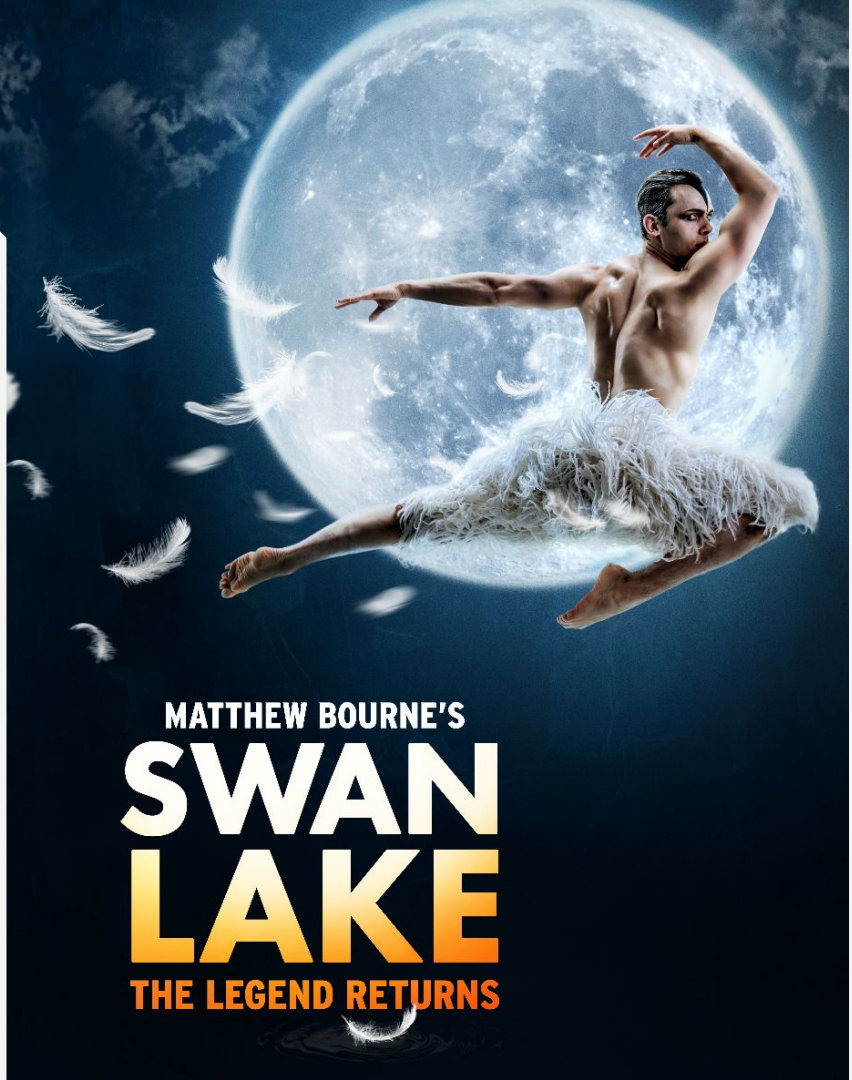
CSR

We actively engage people of all ages and backgrounds, whether through the award-winning Good Times: Art for Older People programme, which has helped combat loneliness, isolation and inertia with weekly art activities, or The Creatives, which tackles isolation and social exclusion in at-risk groups of younger people. The Gallery is committed to lasting and qualitative change in people's lives.

Link up your schools and charities with our Learning and Outreach programmes. Employee volunteering opportunities with Learning workshops relating to the exhibition
Opportunity to direct a Learning workshop to a school of your choice

NEW ADVENTURES

New Adventures is an iconic and ground-breaking British dance-theatre company, famous for telling stories with a unique theatrical twist. We create world-class productions and engaging projects, reaching thousands worldwide every year. Mixing popular appeal with a ground-breaking, unique theatrical language, world class dancers and high-quality production values, New Adventures is one of the great success stories of British theatre. New Adventures has received numerous international awards and an incredible 12 Olivier Award nominations, including six wins.



MATTHEW BOURNE'S
SWAN
LAKE
THE LEGEND RETURNS

NEW ADVENTURES

REGIONAL AND GLOBAL STAFF ENGAGEMENT

New Adventures tours to more UK and international venues and gives more performances each year than any other UK dance company. We regularly visit over 25 UK cities with every tour and for over 10 years, the Company has been British dance's biggest export. We perform seasons at the world's most iconic venues including Sydney Opera House, New York City Center, The Chatalet in Paris, The Kennedy Center and The Moscow Arts Theatre, and the most prestigious Festivals such as Edinburgh, Ravenna and Chekhov International Festivals. It regularly tours to Japan, the USA, Australia and Europe.

As a leading national and international touring company we work with our corporate partners in a rather special way, offering the chance to engage with us locally, regionally or globally depending on your company's employee engagement needs and priorities.

Employee packages can include the following:

- Top price tickets and complimentary programmes to be used across our productions
- Complimentary use of private rooms and spaces for staff events
- Engaging talks and events with our Artistic Director and creative teams
- Ticket discounts for staff
- Creative staff team-building workshops and talks in your company's offices
- Exclusive opportunities to access our original creative content and performances at your private events
- The opportunity for your staff to get involved in our Farnham Maltings cultural projects
- The opportunity to tailor your support towards key strands of our activity which align with your company's CSR objectives. These might include: emerging talent, education programmes, health and wellbeing.



SADLER'S WELLS

Sadler's Wells is an exciting and vibrant place where the best contemporary dance is made and presented. We commission and produce more new dance work than any other theatre in the world, and are transforming the way the public, as well as creative artists, think about dance and its repertoire.

SADLER'S WELLS

Dance as an art form is a vital power. It has no borders: it transcends social, linguistic and cultural barriers and impels us to open our minds. Dance has the power to stir people emotionally as well as intellectually.

Becoming involved in dance improves people's health, confidence and creativity across generations. We would be delighted to work with you to develop a bespoke programme of staff engagement that may include:

PERFORMING

At Sadler's Wells, we know that working as part of a team to prepare and present a performance contributes to good health and well being, as well as giving people a stronger sense of social cohesion and belonging.

We can offer bespoke opportunities, from site-specific one day workshops to six-month-long projects leading to a performance in our studio theatre or main stage.

Participating in a performance programme allows you to experience first hand all aspects of producing a performance, such as lighting, costume and stage rehearsals.

Other engagement opportunities may include:

- Premium tickets and programmes to Sadler's Wells performances each year
- Invitations to Patrons' Event performances per year, including premium ticket and complimentary hospitality
- Priority booking for shows in advance of the public
- Hire of our amazing spaces for your daytime business events
- Private spaces for staff parties including hosting your Christmas party around our regular Matthew Bourne New Adventures production or The Snowman at the Peacock Theatre
- Behind the scenes tours of the theatre

SHAKESPEARE'S GLOBE

'WE KNOW WHAT WE ARE, BUT KNOW NOT WHAT WE MAY BE.'

Hamlet, Act 4, Scene V

The Globe Theatre. 1,500 audience members hungry for your story. Actor. Storyteller. Director. Hear your heart against your chest. Feel your blood in your veins. Don't just tell your story: live it, breathe it, sell it. Win the audience.

400 years after his death, Shakespeare remains the foremost writer in the literary canon. His creativity and innovation as an actor, playwright and theatrical shareholder, has contributed to his lasting impact on the world and ensures that his plays are read, performed and studied worldwide.



SHAKESPEARE'S GLOBE

Inspired by Shakespeare's entrepreneurial success, Centre Stage offers complete training packages tailored to your organisation's needs. From engaging speech writing to effective presentation delivery; graduate training to leadership development, our expert trainers can create a programme to prepare your employees to always deliver their best performance.

OUR CLIENTS INCLUDE

Deutsche Bank, Facebook, NHS collaborate, TSB, YouGov, Oxford, Cambridge and RSA, National Education Union

Becoming a Centre Stage client offers a unique opportunity for exclusive access to our Globe Theatre stage or entire Sam Wanamaker Playhouse for your training sessions.

OUR CORPORATE PACKAGES

Whether you'd like a one-off day package or an annual programme, we are committed to creating bespoke packages that develop your delegates and provide lasting results.

- Creative Presentation Skills: Winning your audience. *'Exceeding wise, fair spoken and persuading'*
- Conquer the art of captivating the crowd
- Deliver impactful presentations
- Engage your listeners artfully
- Learn performance skills from acting professionals
- Leadership and Innovation. *'Be great in act, as you have been in thought.'*
- Develop world-class leadership potential
- Champion creativity and innovation
- Be the master of your own business arena
- Lead through times of change
- Speech Writing and Storytelling. *'The readiness is all...'*
- Transform the content of your speeches
- Make your language a powerful negotiation tool
- Tell your story with conviction
- Become a powerful influencer

OUR TRAINERS

Our trainers are all working professional actors with decades of national and international experience. Training with Centre Stage offers you the opportunity to learn from the masters of Shakespearean acting who also have years of experience as lecturers, practitioners and corporate trainers.

We are able to provide training sessions that run from a half day through to an annual programme.

We are committed to tailoring your day to best meet your needs and would be delighted to discuss any additional activities that would enhance your training, including:

- Guided tours of the Globe site
- Hospitality packages, including private dining
- Talks and Q&As with Globe Staff and Shakespeare specialists



SOUTHBANK CENTRE

Southbank Centre is a world-famous, multi-venue arts centre in London, with a dynamic year-round festivals programme and an inclusive ethos. Southbank Centre is the UK's largest arts centre, founded with the Festival of Britain in 1951. It's a place where people experience world-class art and culture that stimulates, inspires, educates and amazes.

Our festival programme encompasses art, theatre, dance, classical and contemporary music, literature and debate. It reaches 6.25 million people a year, and encompasses over 5,000 events featuring world-class artists from across the globe.

SOUTHBANK CENTRE

At Southbank Centre we can provide your business with unique opportunities to reward staff and have access to world-class art and memorable thought-provoking events.

Our programme spans classical music, visual arts, literature, theatre, poetry, comedy, contemporary music, dance, talks and debate - providing great variety and ensuring we can offer something to match the needs of all of your clients, stakeholders and staff.

We offer packages around three strands of our programme: Hayward Gallery, Classical Music and general Southbank Centre Corporate Membership. All our packages are flexible and can be tailored to fit your specific requirements.

Our employee engagement packages can include:

- Tickets - access to sold out events, exhibitions and performances with best seat tickets
- Hospitality - complimentary space hire of our unique event spaces
- Exclusive Invitations & Networking Events - exhibition VIP previews, receptions and special performances
- A programme or through bespoke workshops
- Artistic Events & Curator Talks - enjoy intimate events with high profile artists and exhibition walk throughs
- Personal Account Management - dedicated account manager to help you get the most out of your partnership with us

Example workshops

- In 1987, Southbank Centre was privileged to receive a beautiful Javanese percussion orchestra called gamelan. This was a remarkable gift from the Government of the Republic of Indonesia to the people of the UK as a gesture of friendship.

We can offer inspiring workshops for your staff with one of our expert tutors to sample group music-making on our beautiful gamelan.

- The National Poetry Library's collection offer staff the chance to work with library staff to enjoy the UK's largest collection of contemporary poetry books and recordings.



Rosendale
Partnerships



CONTACT US

Email

rebecca@rosendalepartnerships.com

Phone

0207 183 1728

07725 952947